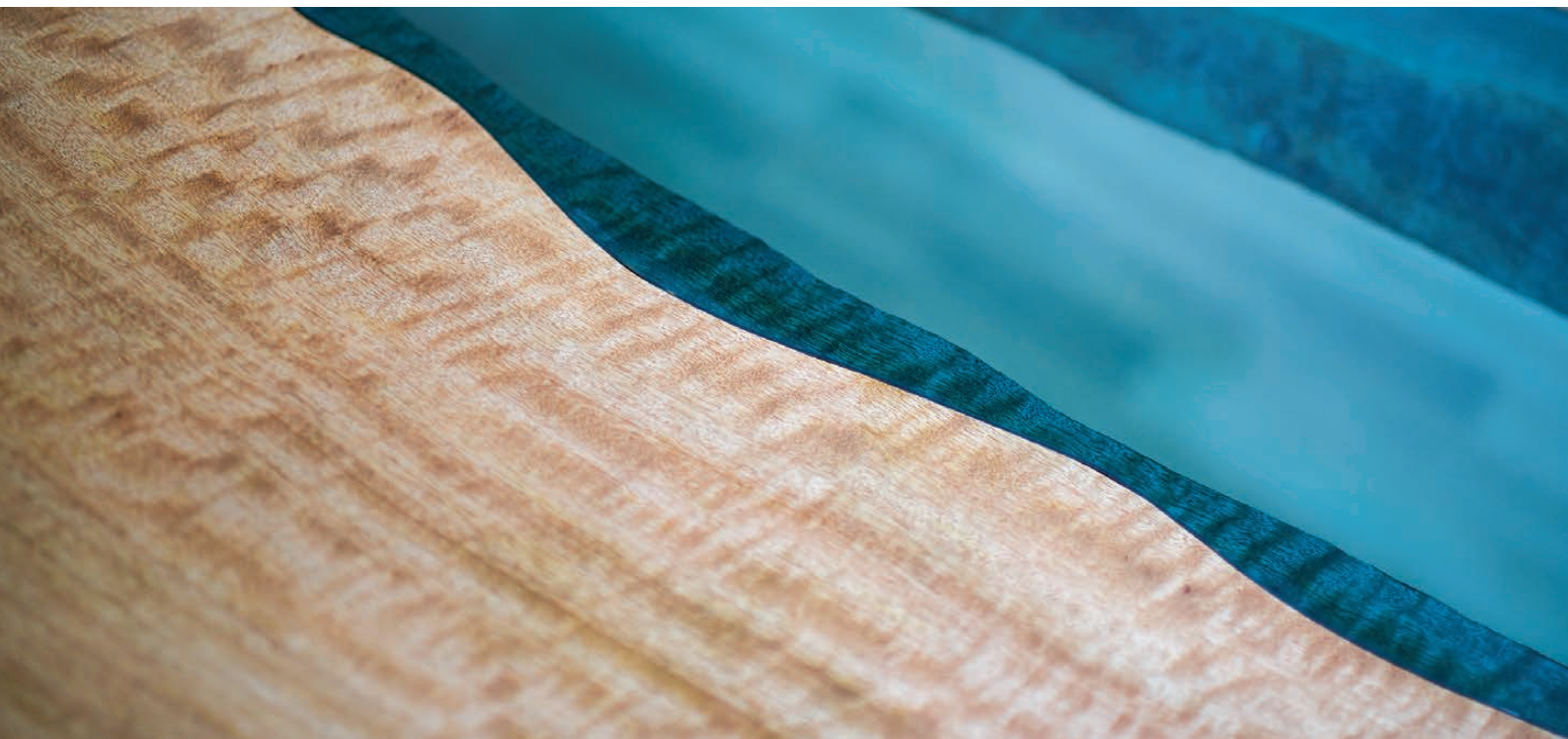


WILD  
ABOUT  
WOOD

---

Contemporary bespoke  
Australian made furniture.

2017/18  
**LOOK BOOK**





# OUR STØRY

---

**At Wild About Wood, we pride ourselves on providing truly unique, contemporary bespoke Australian furniture that meets your every desire.**

The timbers we use have incredible character, having withstood the constant ravages of the harsh Australian climate. As a result of fires, floods, droughts and storms, natural scarring and gum veins occur throughout the timber. With precise selective milling, these details become the unique and superb characteristics of each of our timber slabs.

In addition to the aesthetic appeal, there are real environmental benefits in our designs due to the better utilisation of our sustainable natural timber resources.

The timber we use is especially durable, hard and stable, making it perfect for furniture applications.

We have designed a patented range of furniture, which offers a unique combination of character, durability and environmental responsibility.

By harmonising these features with contemporary designs, we are known for creating special pieces that will be highly valued many decades from now.

# CAMPHØR OFFICE TABLE

---

2,800mm x 1,200mm  
*Commercial collection*



Camphor Laurel is currently declared a noxious weed by the New South Wales and Queensland state governments. With striking darker feature grains that contrast the paler standard timber colouring, these beauties are sadly often cut down and used for firewood. These two timbers came from a 70 year old tree that grew on a dairy farm in rural New South Wales. This table is supported with a gun metal grey flat packed base.



# CAMPHØR DINING TABLE

---

2,100mm x 1,000mm  
*Residential collection*



These two sensationally figured camphor slabs came from two separate trees, which grew side by side on a winery in northern New South Wales, Australia. Spending decades growing alongside each other, it was the perfect fit to let these two slabs finally rest together as a beautifully crafted dining table in a loving home.

With the continual hint of eucalyptus expelling from the slabs, and finished in our food safe natural hard wax oil, this table becomes the place to share laughter, swap stories, and enjoy many family meals for decades to come.



# RED GUM BURL CØFFEE TABLE

---

900mm x 900mm  
*Residential collection*



Red Gums thrive in Australia's irregular weather conditions, and produce large and varying shaped burl wood, growing from the sides of the tree trunk. With the ferocity of grains fighting amongst each other, burls are often sort after timber pieces because of the inconsistent colouring and weaving interlocked grains. Sitting up on a white powder coated base, this design would be perfect as a center piece to any office foyer or home lounge.





## ELM 'WATERFALL' DESK

---

1,800mm x 700mm  
*Commercial collection*

The inspiration behind this eye catching design was drawn from the property on which this Elm originated, growing only a stones throw away from the Mackenzie Falls in the Grampians National Park, Victoria.

Mother Natures raw beauty inspires us to push the boundaries of design and modern furniture concepts. The hand cut glass fits snug inside of the beautiful elm slabs, giving a sense of water flow across the top and side of the desk, just like a waterfall.



# RED GUM CØFFEE TABLE

---

1,100mm x 700mm  
*Residential collection*

These Red Gum slabs were cut from a large 100 year old tree on a rural farm in the high country of Victoria, Australia. Red Gum is renowned for its heavy and dense structure, and it's tightly woven interlocking grain lines.

It often has internal gum pockets, which create a beautiful feature, along with the heavy fiddle-back markings from the taller trees. Resting on a white powder coated tripod base, it makes for a very audacious centerpiece in any high end residence.



# MANGØ DINING TABLE

---

2,100mm x 1,000mm  
*Residential collection*



Mango trees grow as the largest of all fruit trees native to Australia. These timber slabs came from a mango farm in the rolling plains of inland Queensland, Australia. Sitting high up on a hill, this large Mango tree produced seasonal fruit while gently swaying in the wind for 100 years.

This elevated position made it a sort after tree as the timber was riddled with fiddleback feature grains from the continual swaying in the wind. These markings become three dimensional once applied with our natural hard wax oil and give that phenomenal chatoyancy effect along the table.



# RED MALLEE BURL CØFFEE TABLE

---

1,400mm x 700mm  
*Residential collection*



This burl was cut from a large Red Mallee tree that was an estimated 350 years old. Its large size and near perfect oval shape, along with the rare birds eye grain and spiky edges, makes this a stylish occasional furniture piece that demands respect in any home. The design incorporates a bold hand cut glass panel fitted snug inside the timber base, showing structural integrity mixed with a modern elegance.

With this unique piece we hope to inspire people to question what is possible with solid timber slab furniture.



## MESSMATE BURL FØYER/ENTRY TABLE

---

1,500mm x 1,500mm  
*Commercial collection*



Messmate grows as one of Australia's tallest tree species, up to 90m in height, although it uncommonly produces burl wood, especially of this size.

With adventurous waving grains, and big empty voids, this is a furniture piece that attracts attention. The circular shape and erratic colouring, showcases nature and the often hidden beauty surrounding us.





# BLACKWOOD CONFERENCE TABLE

---

3,000mm x 1,200mm  
Commercial collection

This rare and extremely large 100 year old Tasmanian Blackwood tree is a very unique piece. Being an acacia species they rarely live longer than 30 years.

A vibrant and stunning combination of colours from yellows, light oranges, whites, browns and all with black growth lines along the slab. A one piece solid slab top resting on minimalist inspired Blackwood legs.



# ELM ENTRY TABLE

---

1,000mm x 400mm  
*Residential collection*



This Elm timber slab had seen better days with fault cracks appearing, it was destined to be nothing more than firewood. Instead, we combined the Elm top with some tight grain Silky Oak butterflies. This woodworking technique strengthened and rejuvenated the top, while still showing the elegance of handmade Australian furniture. Featuring a charming on trend copper skirt around the base of the legs, and a hidden draw for storage of those small treasures, this Scandinavian minimalist inspired piece is a perfect fit for any residential home.





## ELM BENCH/ STOOL

---

900mm x 350mm  
*Residential collection*



A versatile continuous grain folded bench stool with many functional uses. A vibrant chocolate colour and sensational feature live edge, this comforting piece fits into every home. By the front door to hold your shoes, and let you sit while getting prepared for your day ahead, through to the outdoor area, as an extra bench when needed for your unexpected guests. The versatility of this piece is limitless.

# AUSTRALIAN TIMBER

---

They call Australia 'the lucky country', and why wouldn't they! With picture perfect beaches on every corner of the map, and beautiful untouched open plains floating across the horizon as far as the eye can see.

For a nation that was colonised just over 200 years ago, we are certainly lucky to have some colossal trees, which are often more than 500 years old!

Some of these mammoth trees are still growing on private properties today. Once they sadly succumb to Australia's harsh conditions, we harvest the slabs so we can help to share the history behind their fight to stay alive through long droughts and wild bush fires.

We want to celebrate their story in the form of finely detailed bespoke furniture, that you can share with others.

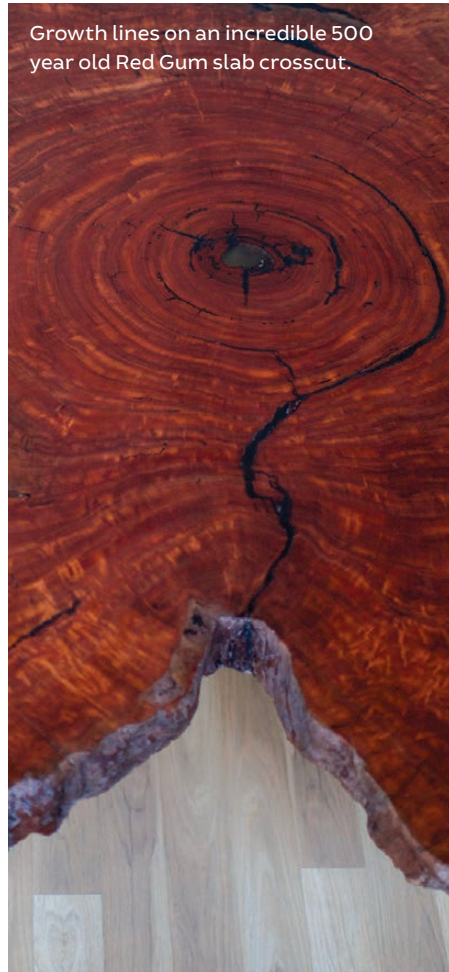
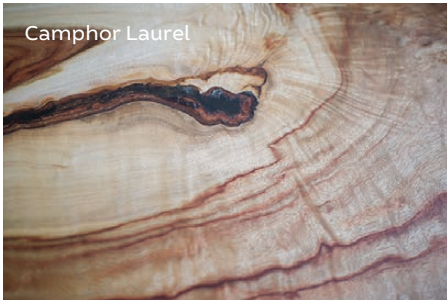
## **TIMBER SOURCES:**

Our Australian timber is sustainably sourced from around the country. In our Yarra Valley warehouse, we have a wide range of timber varieties available in a number of shapes and sizes.

## **TIMBER SPECIES:**

We stock approximately 40 species of timber at any one time. Some of our favourites include:

- > Camphor Laurel
- > Red Gum
- > Silky Oak
- > Blackwood
- > Messmate
- > Chestnut



# ØUR PASSION

---

Naturally growing and completely sustainable, timber has a warming quality. With such beauty concealed in the center of these logs, incorporating timber into your home or next project is both rewarding and environmentally friendly. But most importantly, we must instill upon our younger generations the concept of sustainable practices.

With an abundance of beautiful species surrounding us in Australia, and very consistent growing conditions, the strength and durability of Australian timber is above many other nations in the world.

Through our designs, we hope to make the answer simple when you look for furniture solutions: choose Australian timber.

**Ross Wilding**, Wild About Wood



## **CUSTOM DESIGN ENQUIRIES:**

We offer full custom design services for residential and commercial customers. We can guide you through timber selection based on size requirements through to the type of finish on the wood and base style.

For custom design enquiries, please email [sales@wildaboutwood.com.au](mailto:sales@wildaboutwood.com.au) with any details and we will get back to you to start a conversation.

## **WILD ABOUT WOOD**

**tel.** +61 400 181 099

**email.** [sales@wildaboutwood.com.au](mailto:sales@wildaboutwood.com.au)

**web.** [www.wildaboutwood.com.au](http://www.wildaboutwood.com.au)

 /wildaboutwood



# CØNTACT US

---

**tel.** +61 400 181 099

**email.** [sales@wildaboutwood.com.au](mailto:sales@wildaboutwood.com.au)

**web.** [www.wildaboutwood.com.au](http://www.wildaboutwood.com.au)

 [/wildaboutwood](https://www.instagram.com/wildaboutwood)

